

AFRICAN MARKET OBSERVATORY (AMO) PRICE TRACKER

February
2024

Maize
Maize meal
Soybean
Soybean meal
Rice
Fertilizer
Poultry
Vegetable oil
Common beans

Fair & Sustainable Markets for Food Security



CCRED
CENTRE FOR COMPETITION,
REGULATION AND
ECONOMIC DEVELOPMENT

Welcome to our February 2024 food price tracker.

This is an initiative of the **African Market Observatory** (AMO).

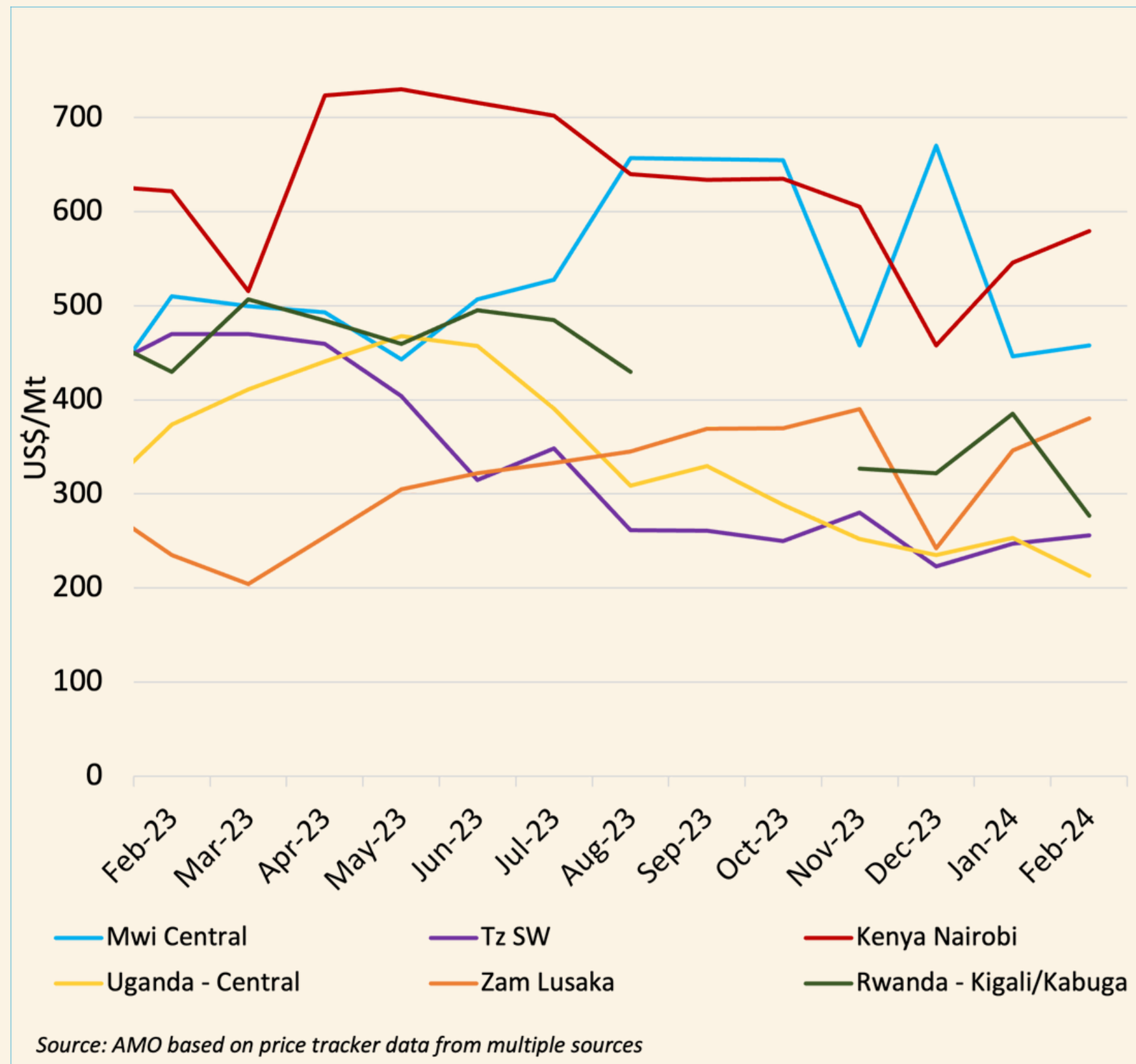
It summarises key trends in prices in East and Southern Africa (ESA) for selected staple food products, focusing on highlighted areas.



Key developments

- Southern Africa experiencing volatile weather conditions
 - Over a thousand households displaced in Malawi floods, and food crops submerge
 - Drought destroys half of the maize crop in Zambia, and bulk of 2023/24 maize crop in Zimbabwe
 - Dry, hot weather in South Africa to lower maize and soya bean yields
- 2022/23 Tanzania bumper harvest of 2.1 million tonnes \approx 50% of Kenya's annual maize demand
- Ad hoc non-tariff trade barriers against Tanzania's rice keep Uganda's rice prices the highest in the region.

Kenya's maize prices highest in ESA - potential trade partners Uganda and Tanzania with lowest prices

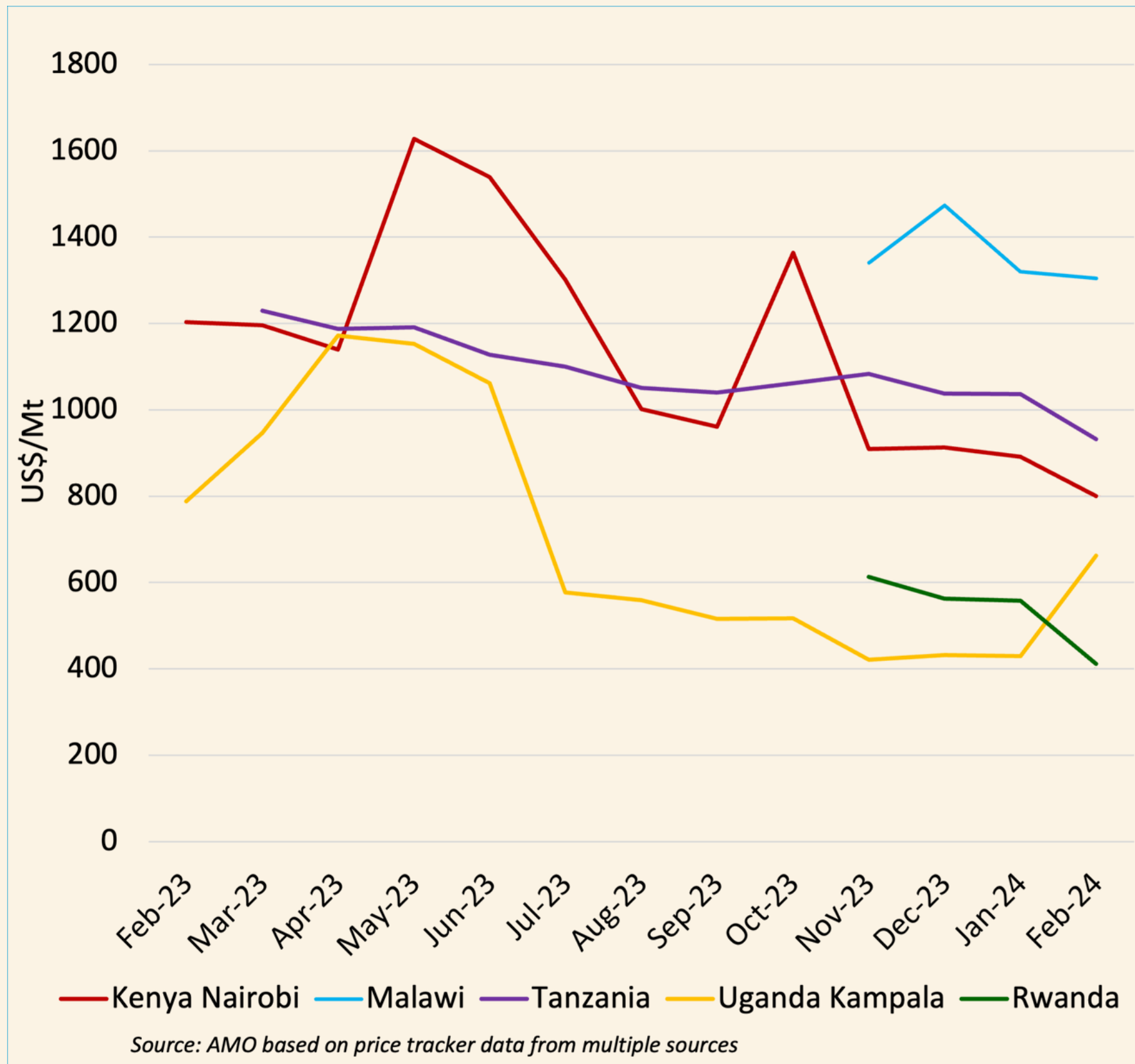


- Malawi price (US\$458/Mt) influenced by supplies from ADMARC, and release of stocks from traders
- Excess rains lower Ministry farmgate prices in Rwanda, this pushes maize prices in Feb to US\$277/Mt
- Zambia export ban after losing 50% of crops for 2023/24 season.

Beans * in ESA

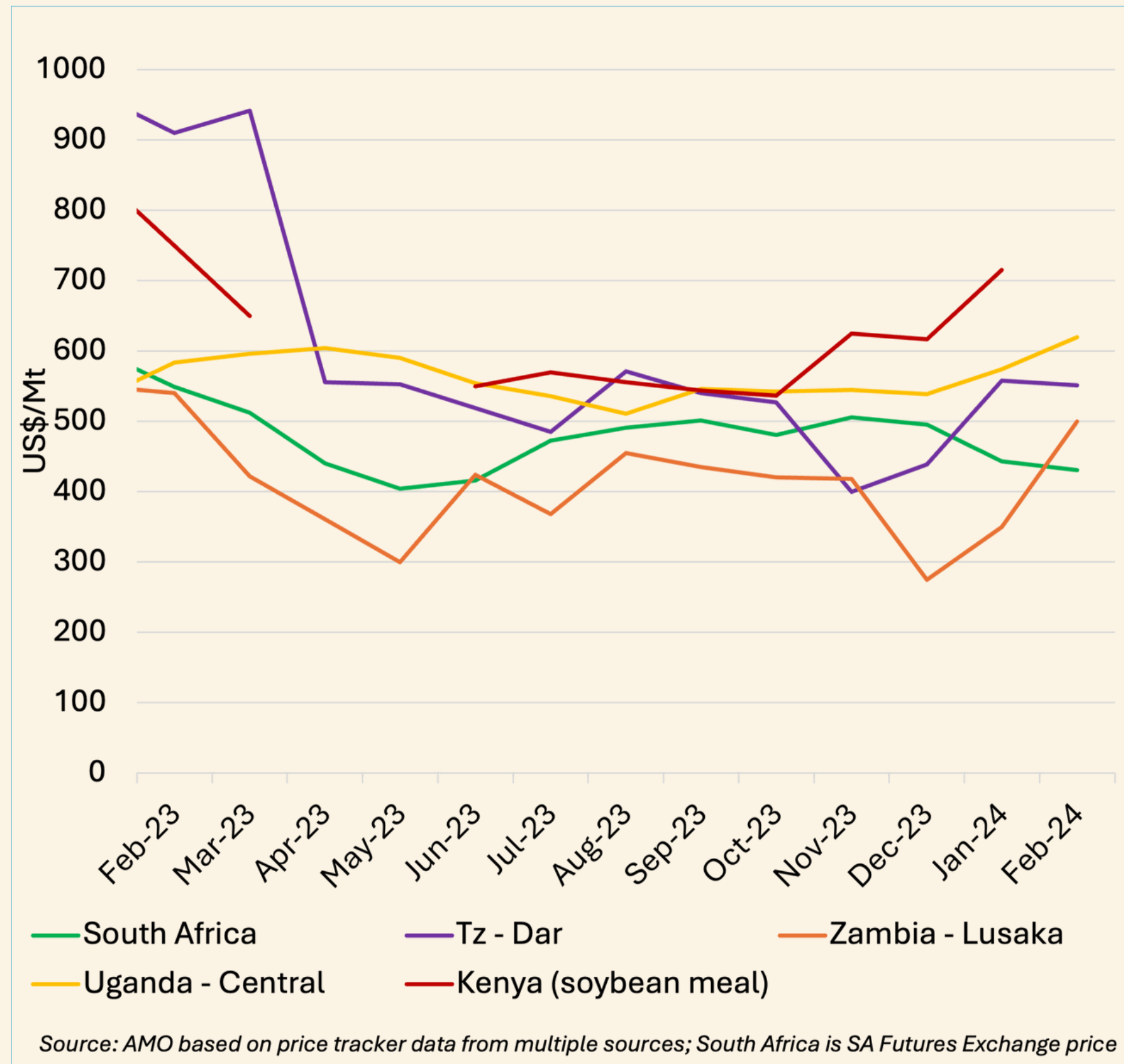
- Staple food and an important source of protein, essential for food supply ESA
- Common dry beans among the most produced field crop in ESA, particularly in Kenya, Tanzania, Malawi, and South Africa
- Most countries are self-sufficient producers, Tanzania and Uganda large net exporters
 - Key importers of beans include South Africa and Kenya.
- High bean producing nations see significant production swings due to unfavorable weather patterns
- Dry beans have low drought tolerance, making drought the main limiting factors for their production
 - Drought related losses occur at least once every four years.

Bean price in Malawi is 3x Rwanda price



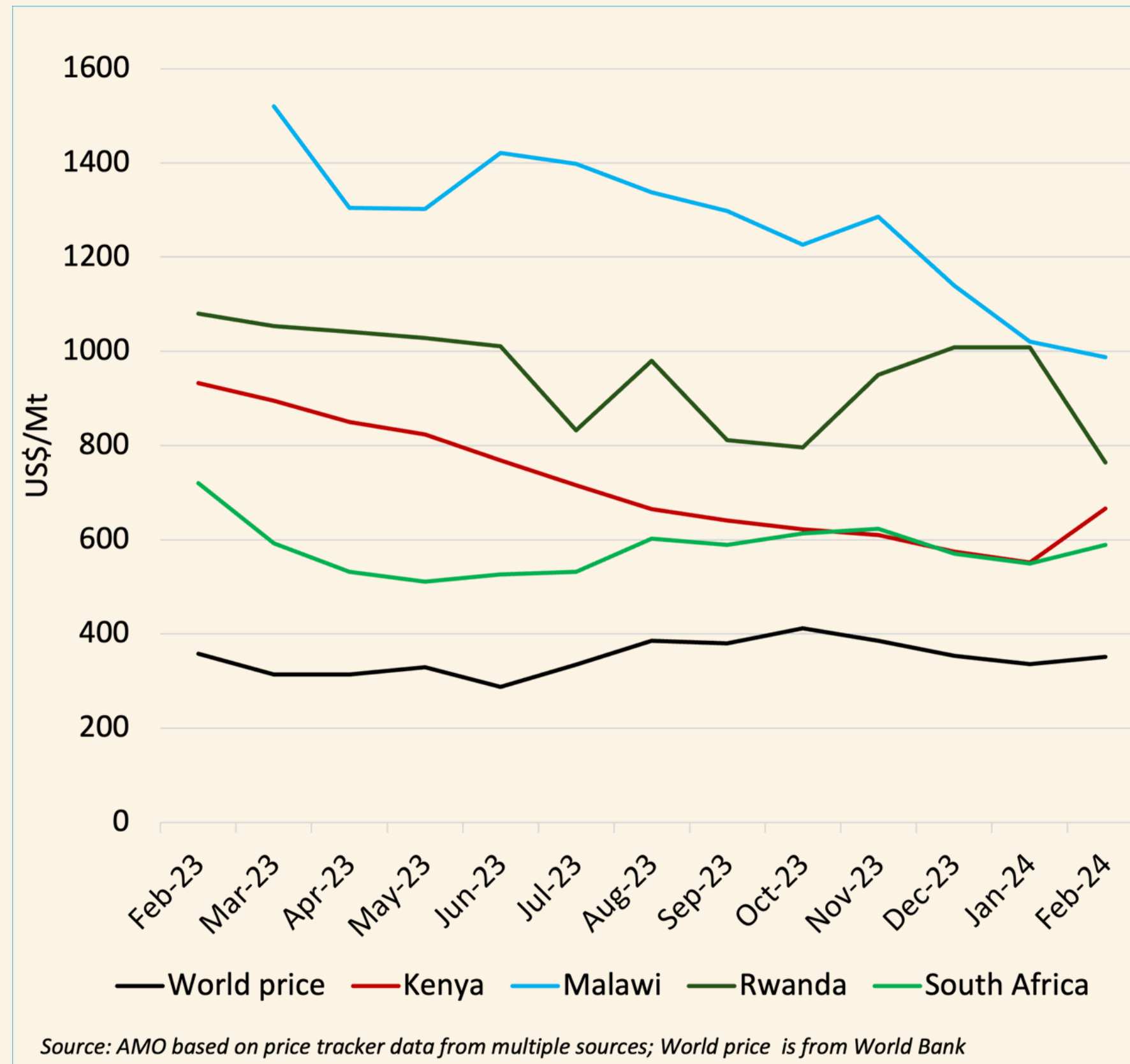
- Malawi prices (US\$1304/Mt) the highest, at 3X the Rwanda bean price of US\$412/Mt in Jan '24
- Tanzania follows with US\$932/Mt, though prices relatively stable
- Significant volatility in Uganda and Kenya's bean prices

Soybean prices in the region remain stable and reasonable



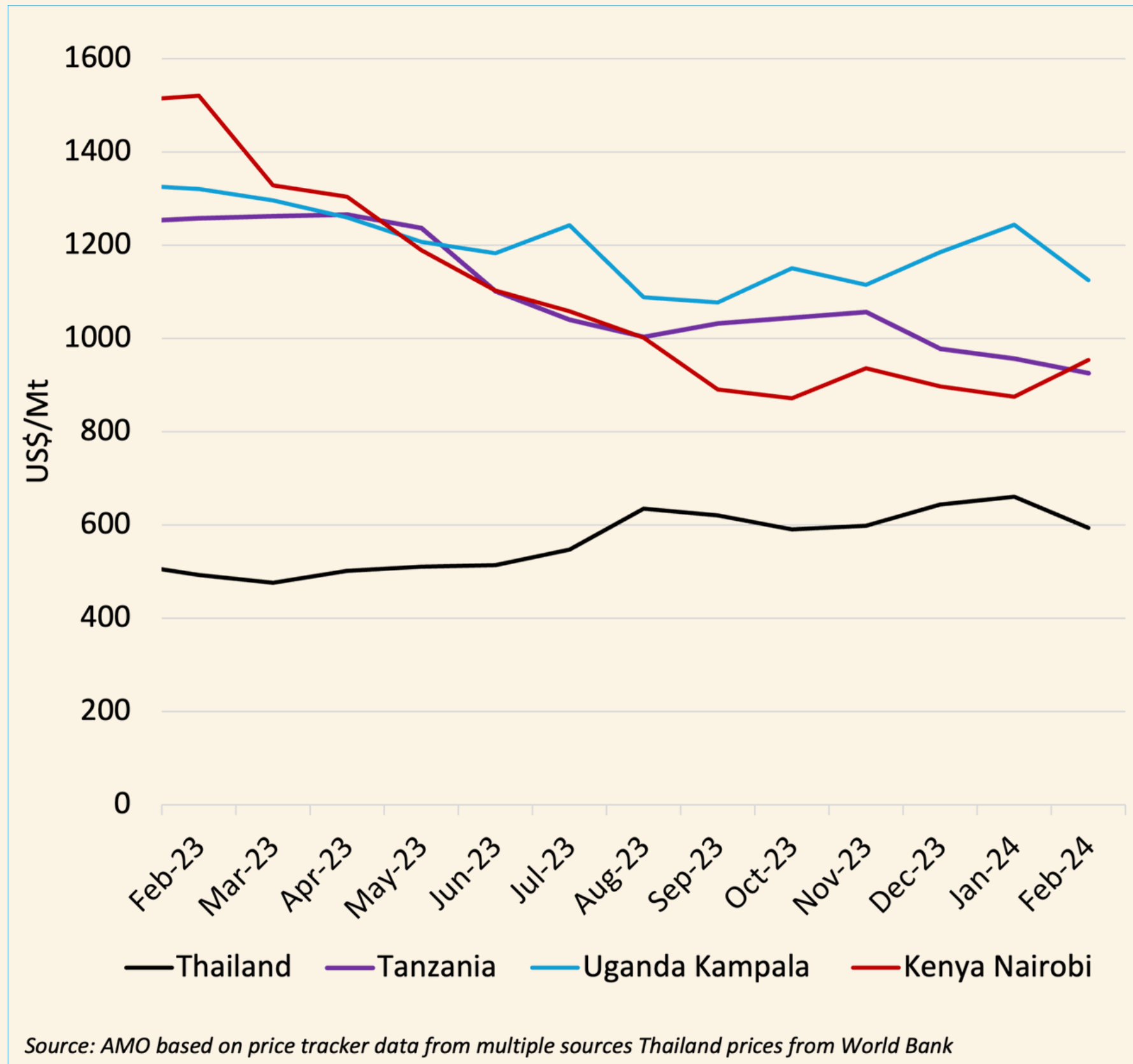
- Kenyan soymeal prices continue to rise at US\$715/Mt, while Tanzania's soybean prices ↓ marginally from US\$558/Mt in January to US\$551/Mt
- Zambia's soybean production may ↓ by 50%, as significant planting area was **lost to maize** and price at US\$500/Mt almost 2x from Dec '23

Urea fertiliser prices remain high in the region



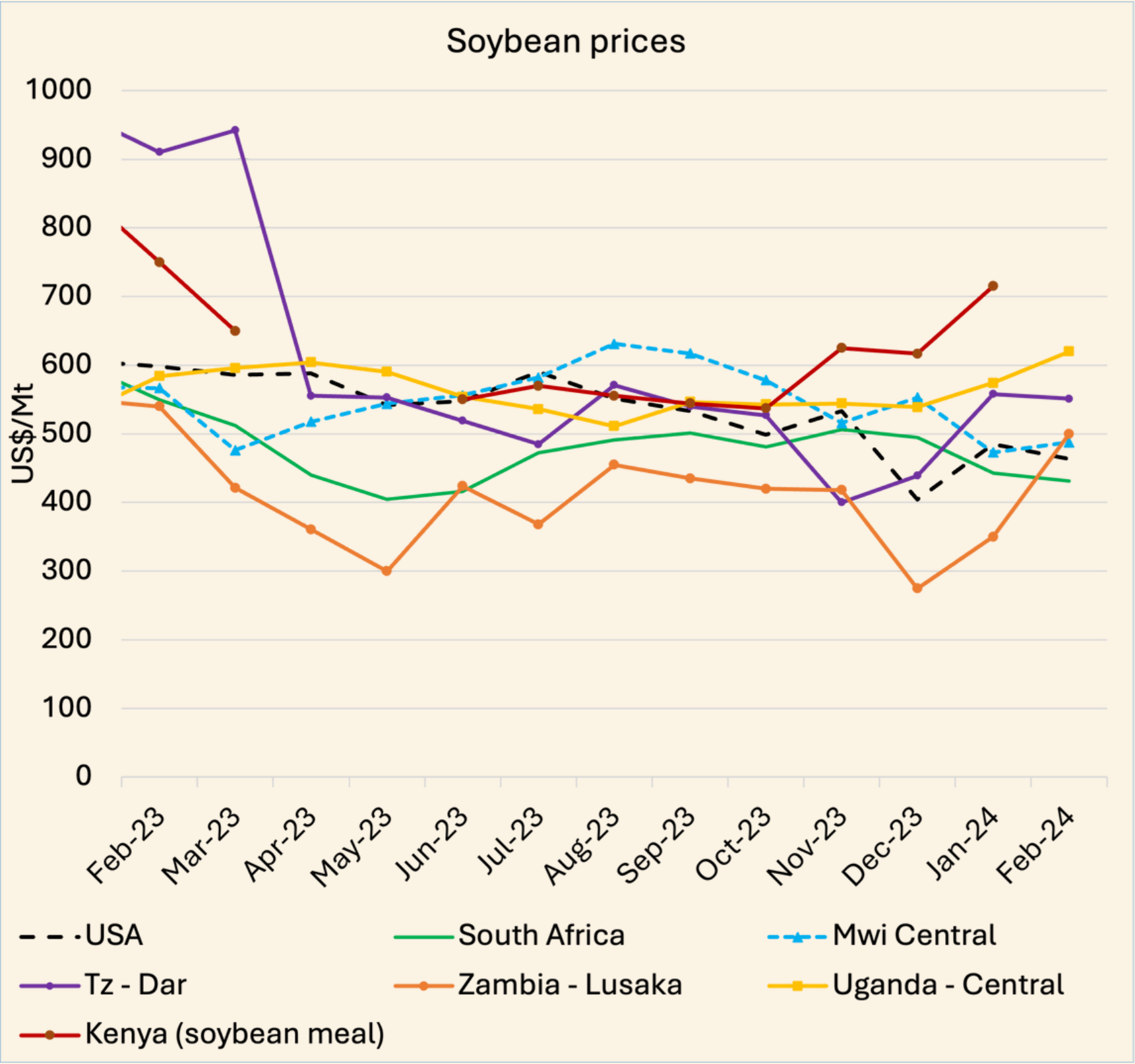
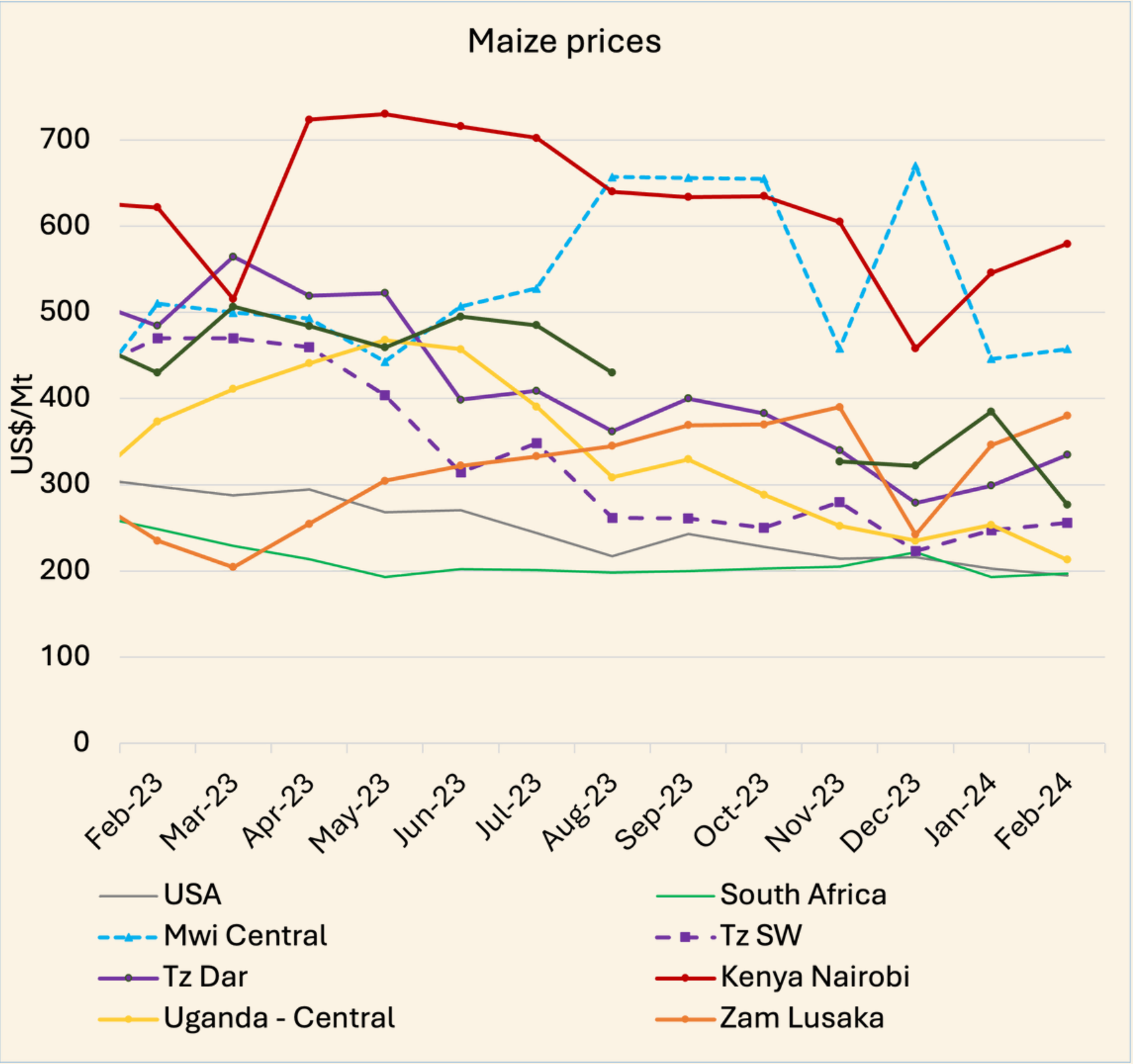
- Malawi fertiliser prices still highest in the region at US\$978/Mt.
- Rwanda govt regulated price, stops upward trajectory
 - ↓ by 24% in Feb '24 to US\$764/Mt.
- Kenya price ↓ amidst the delivery of over 15th Mt out of the 600th Mt subsidised fertiliser to be imported in 2024

Regional rice prices remain with Uganda in top position



- Regional rice prices remain high, with Uganda at US\$1125/Mt in Feb '24.
- Uganda had multiple non-tariff trade barriers on rice from Tanzania in Jun and Oct '23
- International rice prices to remain high as extreme weather conditions, El Niño, threaten Asia's 2023/24 harvest.

Detailed price charts – International & selected ESA



Source: based on price tracker data from multiple sources; South Africa is SA Futures Exchange price; USA is fob prices from SAGIS.



CCRED
CENTRE FOR COMPETITION,
REGULATION AND
ECONOMIC DEVELOPMENT

The AMO is an initiative by the **Centre for Competition, Regulation and Economic Development (CCRED)** at the University of Johannesburg



www.competition.org.za/africanmarketobservatory



info.amo@uj.ac.za



CCRED



@CCRED_UJ

The AMO is supported by

